

SANDY BUTTE KIDS

FOOD

GRILLED CHEESE Grilled Cheese on sourdough bread. Served with fries or veggies 6

MAC N CHEESE Macaroni and cheese served with veggies 7

CHICKEN TENDERS Deep fried chicken strips. Served with your choice of fries or veggies 8

MINI BURGER Hamburger patty and cheddar cheese on a bun. Served with fries. 10

KIDS 4OZ SIRLOIN STEAK 4oz Sirloin Steak cooked to your liking served with fries and veggies. 12

DRINKS

MILK Choose 2% or chocolate 1.75

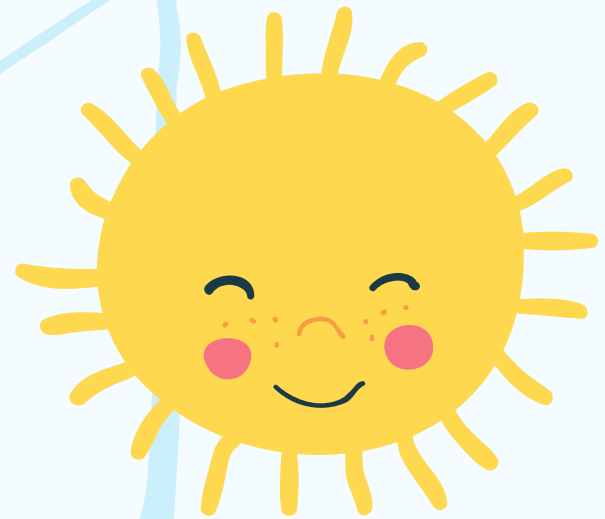
RASPBERRY LEMONADE 2.25

SHIRLEY TEMPLE 7up, grenadine and a cherry 2.5

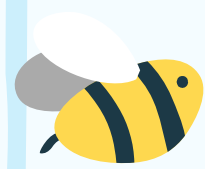
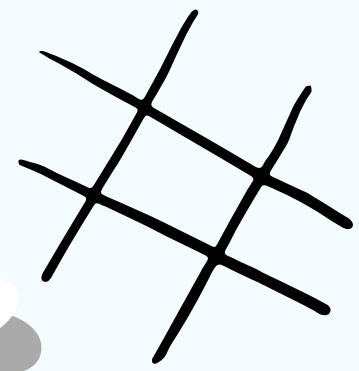
ROY ROGERS coke, grenadine, cherry 2.5

ITALIAN SODA Choose either Blue Raspberry or Strawberry Italian soda with cream 2.5

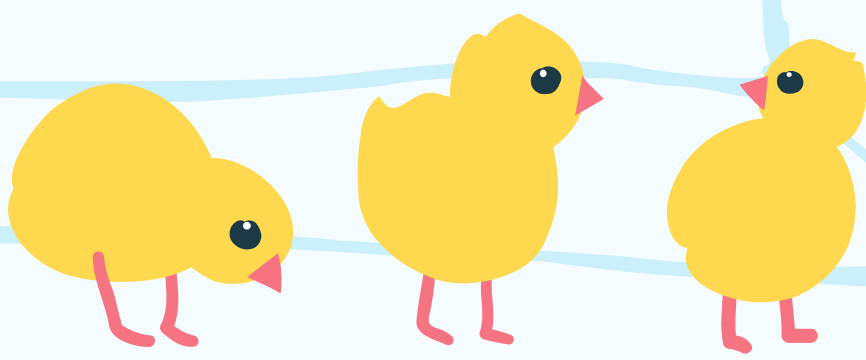
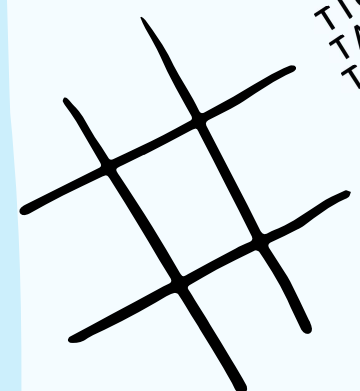
SODA 1.75



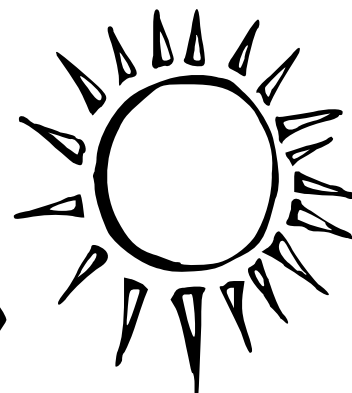
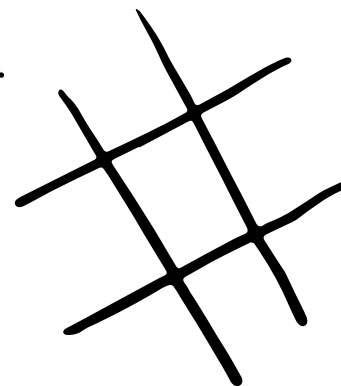
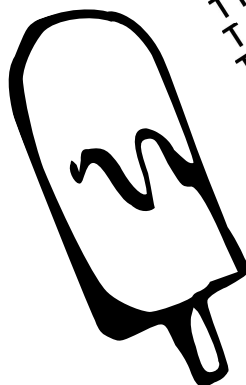
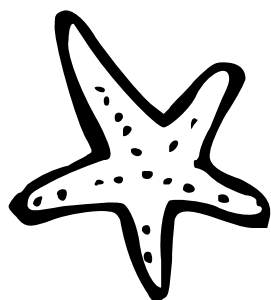
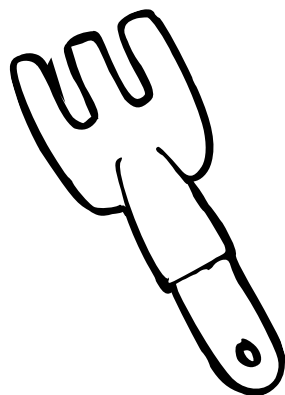
TIC TAC TOE!



TIC TAC TOE!



COLOR AWAY!



SOLVE THE
CROSSWORD

PUZZLE

Find these words!

BUMBLE BEE

CHICKS

BUTTERFLY

SUN

SUMMER

| | | | | | | | | | | | | | | | | | |
|---|---|---|---|---|---|---|---|---|---|---|---|---|---|---|---|---|---|
| I | L | F | U | Q | S | H | B | B | Y | M | A | O | X | L | T | U | P |
| E | N | K | B | G | S | C | U | T | U | V | I | F | T | D | L | M | O |
| Z | O | P | F | A | U | Q | T | F | T | M | V | B | V | O | M | S | X |
| W | H | H | J | E | M | E | T | C | Y | A | B | Y | L | X | L | F | H |
| W | Y | Z | Z | S | M | P | E | P | H | E | K | L | U | U | O | L | O |
| H | E | R | Z | Y | E | R | R | N | I | I | L | G | E | Z | E | I | Z |
| E | G | H | Y | A | R | B | F | N | Y | Y | C | L | J | B | B | C | O |
| O | A | X | H | K | O | T | L | T | P | O | U | K | O | V | E | Q | C |
| P | T | D | S | B | H | P | Y | A | O | F | T | O | S | W | K | E | I |
| B | A | H | I | U | N | O | H | J | J | K | U | X | N | E | X | G | U |
| W | R | W | W | F | N | X | T | G | Z | T | T | E | X | X | N | H | F |
| J | I | P | N | I | N | V | B | E | X | M | C | O | E | E | F | C | R |